

GST Code 3 Module™

Add-on Utility for GST Tracker® / Mapper® Solutions

Do your dispatchers and watch commanders know which patrol units are in Code 3 with light and siren on?

Do you know where those Code 3 units are?

In the case of litigation, when an officer in high-speed pursuit got involved in an accident, can your agency prove that the patrol officer had Code 3 lights and siren on at the time of the accident?

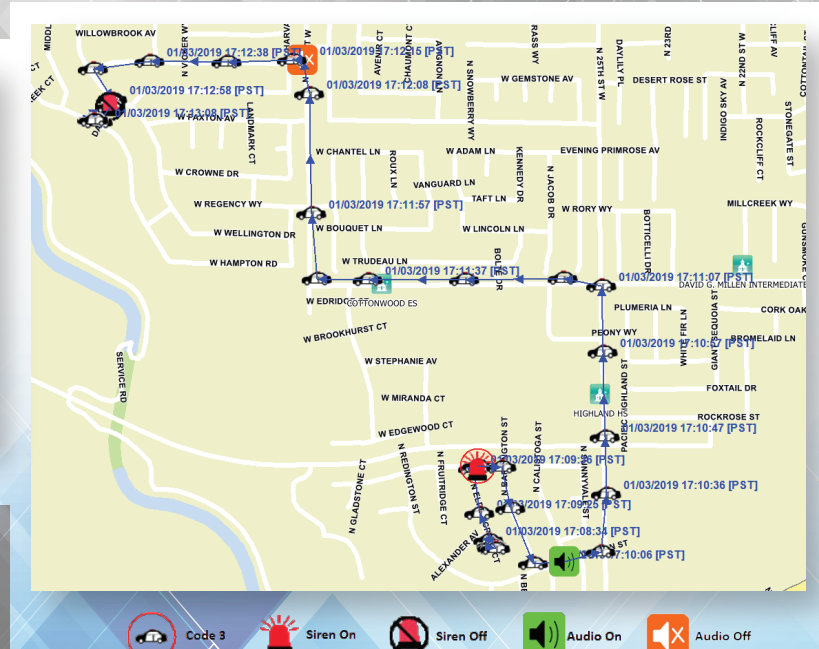
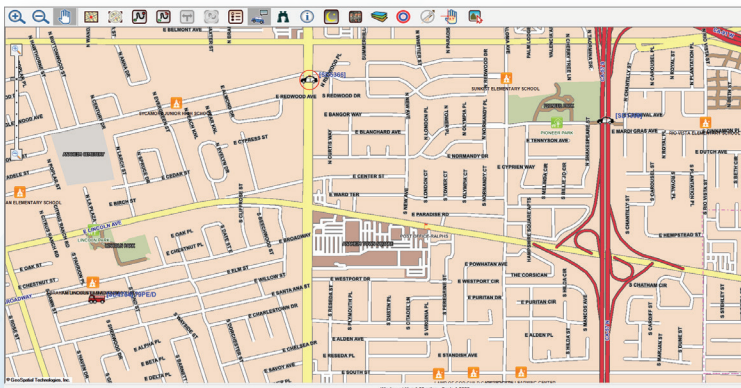
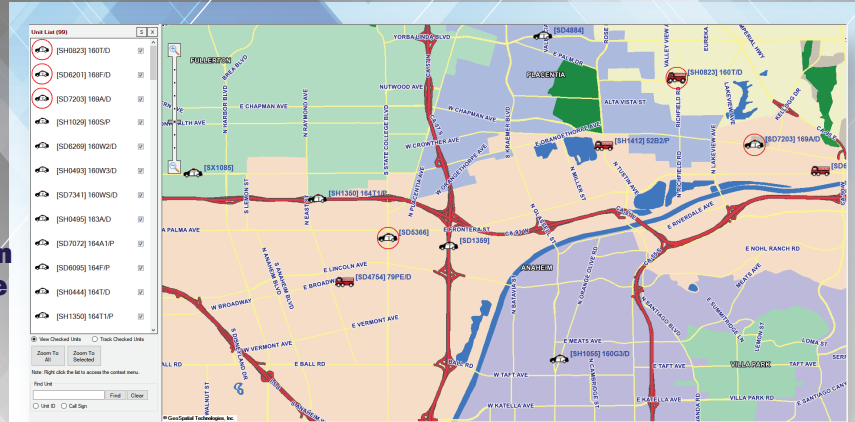
When an officer activates Code 3, are other patrol officers aware of the Code 3 status and the location of that officer?

With GST Code 3 Module™, an add-on utility of GST's AVL mapping solutions, you can answer all the above questions with hard evidence.

When an officer activates Code 3 within their vehicle, dispatchers and watch commanders are immediately alerted by the display of a special symbol around units with Code 3 status on GST Viewer map display.

All patrol officers with GST Mapper® installed in their vehicle can see any sister units in Code 3 status in real time. Nearby units may take proper actions to support those units in Code 3.

When an officer becomes involved in an accident en route to an incident, or during a high-speed pursuit, the agency can use the Code 3 playback function to prove that the officer was Code 3 with lights and sirens on at the time of the incident, showing when and where the officer activated Code 3 prior to the accident.



For Further Information, Contact GST:



GeoSpatial Technologies, Inc.

1432 Edinger Ave., Suite 220
Tustin, CA 92780

Phone: (714) 861-7033 Fax: (714) 861-7032

Email: info@geospatialtech.com

Url: www.geospatialtech.com

© 2019 Geospatial Technologies, Inc. All rights reserved